

REVISION HISTORY

REV	DESCRIPTION	DATE	APPROVED
2	Cosmetic changes	2014-09-16	Justin

Hulk Earth Anchors – HP35

Type: Impact Driven Soil Anchor for tensile loads.

Dimensions: Width: 35mm
Height: 47mm
Length: 125mm

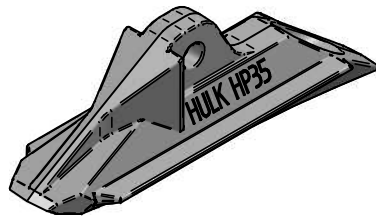
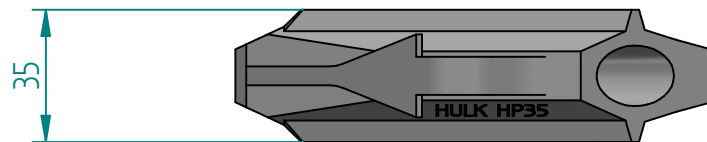
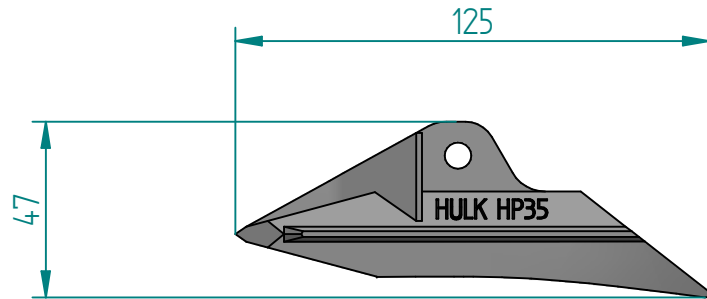
Weight: 0.285kg

Material: Ductile Iron

Mechanical Properties: Ultimate Strength: 30kN
Yield Strength: 19kN
Note: Holding capacities are tendon and soil dependant

Soil Bearing Surface Area: 38.75cm²

Typical Installation Depth: 0.9m to 2.5m



TITLE	REV	SCALE		NAME	DATE:	DISTRIBUTED BY: AR+R PTY LTD ANCHORING ROPE AND RIGGING 1300 692 626 www.arandr.com.au
Hulk HP35	2	1:2	DRAWN	JUSTIN	2013-09-15	
DRAWING NUMBER	WEIGHT	SIZE	CHECKED	ROBERT	2013-09-15	
HLK-HP35	N/A	A4	APPROVED	JUSTIN	2013-09-15	
Unless otherwise specified: All dimensions are in millimeters, Tolerance ±0.2mm, ±0.5°		Sheet 1 of 1		Hulk HP35 Specification Sheet – Rev 2.dft		

